



# Culture media autoclave preparer "Med 40 CLT"

CONTROL OF PROCESSES BY MICROPROCESSOR.  
FOR ADJUSTABLE TEMPERATURES FROM 105°C TO 125°C.  
VERTICAL MODEL CAPACITY: 40 LITRES

NEW

REGULATION SYSTEM 3

## STANDARD

EN 61010-1  
EN 61010-2-040  
EN 61326

SAFETY REQUIREMENTS FOR LABORATORY USE EQUIPMENTS.  
SAFETY REQUIREMENTS FOR LABORATORY USE EQUIPMENTS. STERILIZERS.  
REQUIREMENTS FOR ELECTROMAGNETIC COMPATIBILITY OF LABORATORY EQUIPMENTS.

## APPLICATIONS

Ideal for the operative workflow in microbiology and in tissue culture laboratories. Preparation, sterilization and dispensing culture media is integrated in a single autoclave. High efficiency system in heating, cooling and chamber agitation.

## FEATURES

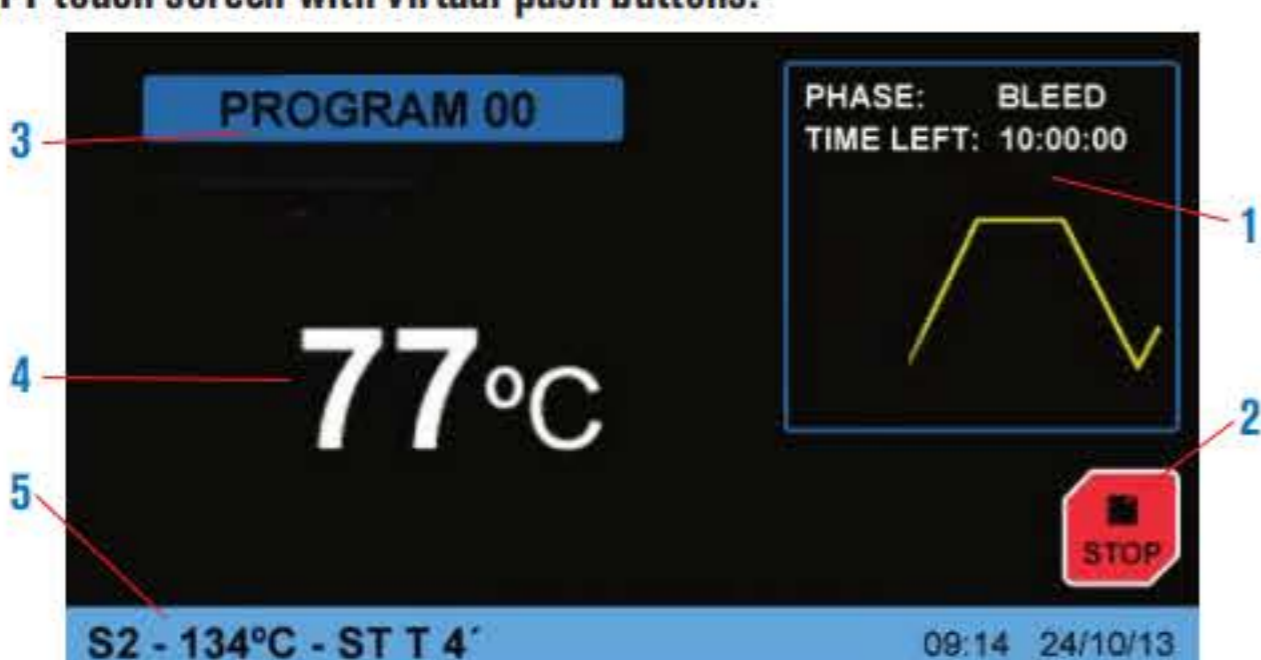
- Stainless steel outer casing.
- Tank and cover in stainless steel.
- USB output for data recording in PEN-DRIVE.
- 50 programs totally configurable by the user.
- Dosage per peristaltic pump.
- Dosage control by a pedal.
- Magnetic stirrer for internal stirring with PTFE rod.
- Agitation speed adjustment (50-200 rpm).
- Filler for dosage additive.
- Temperature control by water probe and by product probe.

## SAFETY

- Safety:** The lid cannot be opened if the chamber is under pressure.
- Safety valve:** Prevents over pressure over the maximum limit.
- Safety pressure switch:** switches the heater power off to if over pressure.
- Safety Lid:** insulated lid protection.

## CONTROL PANEL

TFT touch screen with virtual push buttons.



- Graphical representation of processes in real time
- Start/Stop button.
- Program in execution.
- Temperature indicator.
- Parameters of the program in execution



Available from July 2020

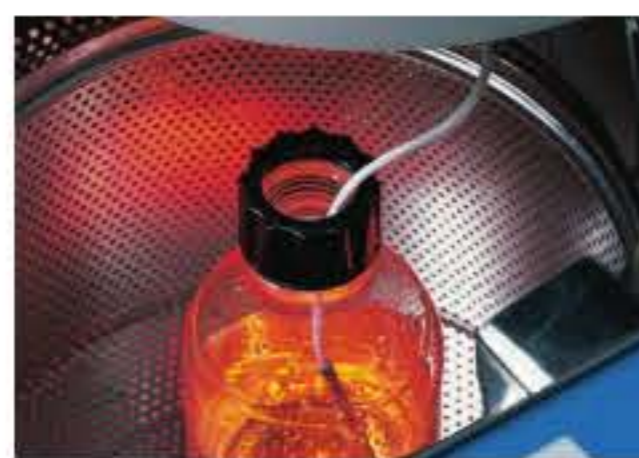
## MODEL

Part No.	Capacity litres	Ø Height (useful) cm	Height /Width / Depth (exterior) cm	Power W	Weight Kg
4002000	40	20 45	117 50 65	6000 III phase	95

COMPLEMENTS that must be installed at the factory:

Printer on continuous paper with indication of temperature, time and mode. Part number 4002417 (See page 61)

## OPTIONS: for vertical autoclaves, need to be factory fitted.



**Pt 100 Sensor.** 2<sup>nd</sup> Probe for reading sample temperature.

To guarantee in all circumstances that the system has completed the cycle to the set time and temperature parameters, the Autester ST DRY PV III autoclave can be installed with a temperature probe that can be placed within the culture flask, residual packets etc.

When the probe is connected to the controller of the autoclave, it must be selected in settings, whereby the real time temperature values detected by the probe, are displayed and printed.

For autoclaves PRESOCALVE III and PRESOCALVE PLUS this Pt100 sensor only reads the temperature with an external thermometer. Part No. 4001219

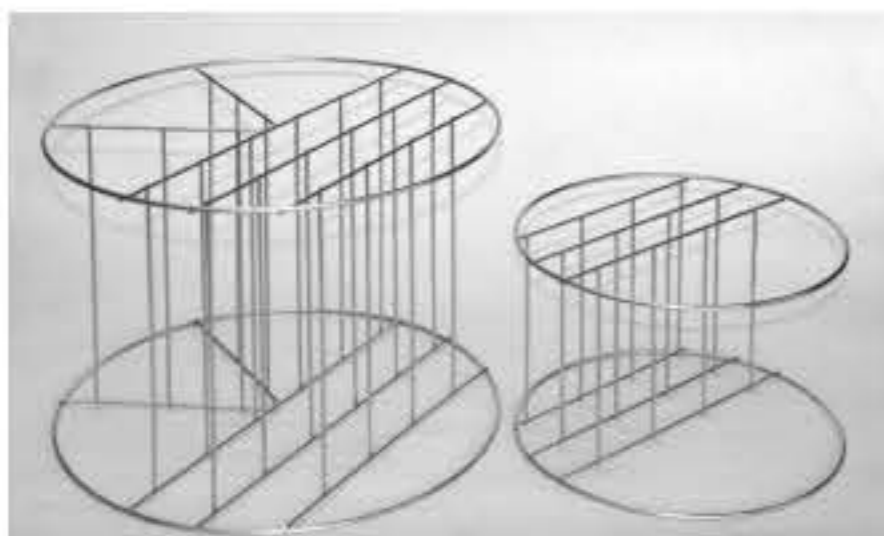
## ACCESSORIES FOR VERTICAL AUTOCLAVES



AISI 304 stainless steel wire baskets.

Part No.	Ø cm	Height cm	Suitable for autoclaves Part No.	Number of baskets
1004771	22	14	4001745	1
1004772	22	24	4001756	1
1004773	23	17	4001757	2
1000495	27	20	4001758 - 4001770 - 4002516	3
1000496	36	28	4001759 - 4001771 - 4002519	2
1000780	44	22	4001772 - 4002518	3
1000490*	26	19	4001758 - 4001770 - 4002516	3
1000491*	36	26	4001759 - 4001771 - 4002519	2
1000492*	47	20	4001772 - 4002518	3

\*AISI 304 stainless steel blind baskets.



AISI 316 stainless steel wire dividers for autoclave baskets.

Part No.

1001217 4 divider compartments for basket part no. 1000495.

1001218 6 divider compartments for basket part no. 1000496.

1001222 7 divider compartments for basket part no. 1000780.



Sterilization Drums.

Código	Ø cm	Height cm	Suitable for autoclaves Part No.	Capacity Drums
1002418	25	18	4001758 - 4001770 - 4002516	3
1002419	35	27	4001759 - 4001771 - 4002519	2
1002420	28	18	Not suitable for our autoclaves.	



**Water distiller, specially for autoclaves "DEST-4".**

Distillation capacity: 1.2 litres/hour. Internal capacity 4 litres.

Case made from thermo resistant plastic.

Internal stainless steel.

Cooling by forced air through a condenser. Without glass heater elements.

Easy to use. Safety cut out system if over temperature due to insufficient water.

Comes complete with a 4 litre three way dispenser plastic bottle with filter.

Note: for daily use it is recommended to change the filter every 3 months.

No external additional water required

Part No.	Capacity Distillation litre/Hour	Conductivity µs/cm	Ø cm	Height cm	Power W	Weight Kg
4001729	1.2	5	29	39	750	3.5

Spare: Dispenser spout with filter. Part No. 4001730

**Detergent "BIO-SEL"**

We recommend the use of BIO-Sel detergent for cleaning, it is also biodegradable and free from Phosphates.

Part No.

1000025 Capacity 1 litre.

1000026 Capacity 4 litres.

1000852 Box of 12 x 1 litre flasks.

1000853 Box of 4 x 4 litre flasks.

