

# X-Cite®

Fluorescence Illumination • In Control

## X-Cite® Vitae™ 6

### Flexible Design and Best-in-class Manufacturing

---

Compact 6-wavelength LED and/or Laser light source for bioanalytical fluorescence applications

---

Full spectrum coverage options from UV to IR wavelengths

---

Liquid light guide or fiber delivery

---

Easy to integrate and control

---

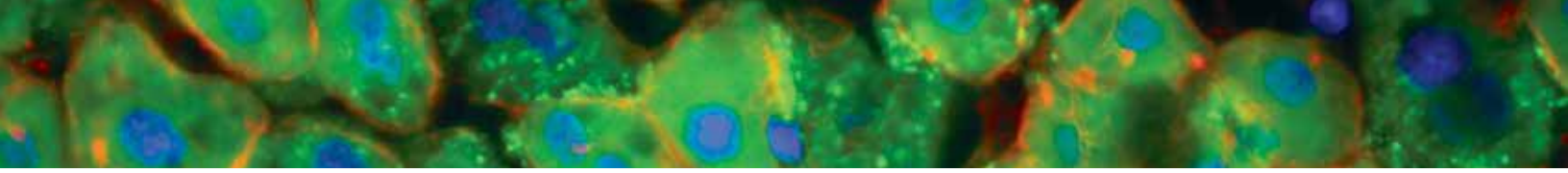
Quality and reliability of X-Cite

---



[www.excelitas.com](http://www.excelitas.com)

**EXCELITAS**  
TECHNOLOGIES®



## X-Cite Vitae 6

X-Cite® Vitae 6 is an illumination platform with flexible design and LED & Laser wavelength options to meet the most demanding fluorescence OEM applications. Whether the instrument being designed is for diagnostic or clinical use, we work closely with the customer to understand their light needs from wavelengths and light path to sensors and software control in order to deliver maximum optical power, illumination control and repeatability.

### Technical Specifications - Customizable upon request

|                       |   |
|-----------------------|---|
| Wavelengths           | UV to IR options available upon request.  |
| Excitation Filters    | Accommodates standard 25mm diameter filters, with 3-5mm frames.   |
| External Power Supply | Universal input 100-240VAC, 50/60Hz   |
| ON/OFF Response Times | 50µs TTL / 1ms USB  |
| Optical Stability     | Wavelength dependent, ≤5% at 22°C ambient   |
| Control Options       | <ul style="list-style-type: none"> <li>• ON/OFF - TTL compatible, typical 800µA</li> <li>• Intensity – Analog, 1-5V, maximum 500µA</li> <li>• RS-232 commands (SDK available), USB</li> </ul> |
| I/O Connections       | DB25 to 12x BNC (6 TTL, 6 Analog), USB (B-type), BNC option available   |
| Dimensions            | 95mm x 230mm x 212mm (W x H x D)  |
| Weight                | 4.5 kg  |

| Features                         | Benefits   |
|----------------------------------|--|
| Independent Wavelengths          | Efficiency. Operate all wavelengths individually or simultaneously, with no “channel sharing” or delays to change internal filters.                            |
| Excitation Filter Holders        | Precision. Fine-tune excitation spectra to your requirements.  |
| Light Guide Delivery             | Flexibility. Direct light into instrument with a light guide style that best suits the application. Main unit can be remotely located if space is constrained. |
| Multiple Control Options         | Simplicity. Operate with USB, TTL, analog or a combination.  |
| Small Footprint                  | Save space. Use less instrument or benchtop real estate.   |
| Optimized Thermal Management     | Reliability. Maximize LED output, lifetime, and stability.   |
| External Power Supply – Optional | Convenience. Power with 24VDC input from instrument or standard wall outlet.   |

Contact us at [X-Cite@excelitas.com](mailto:X-Cite@excelitas.com) to discuss how the X-Cite Vitae 6 can be customized to meet your integration needs.



[www.excelitas.com](http://www.excelitas.com)  
[x-cite@excelitas.com](mailto:x-cite@excelitas.com)

2260 Argentia Road  
 Mississauga, Ontario  
 L5N 6H7 CANADA

Telephone: +1 905 821-2600  
 Toll Free (USA and CAN): +1 800 668-8752  
 Fax: +1 905 821-2055